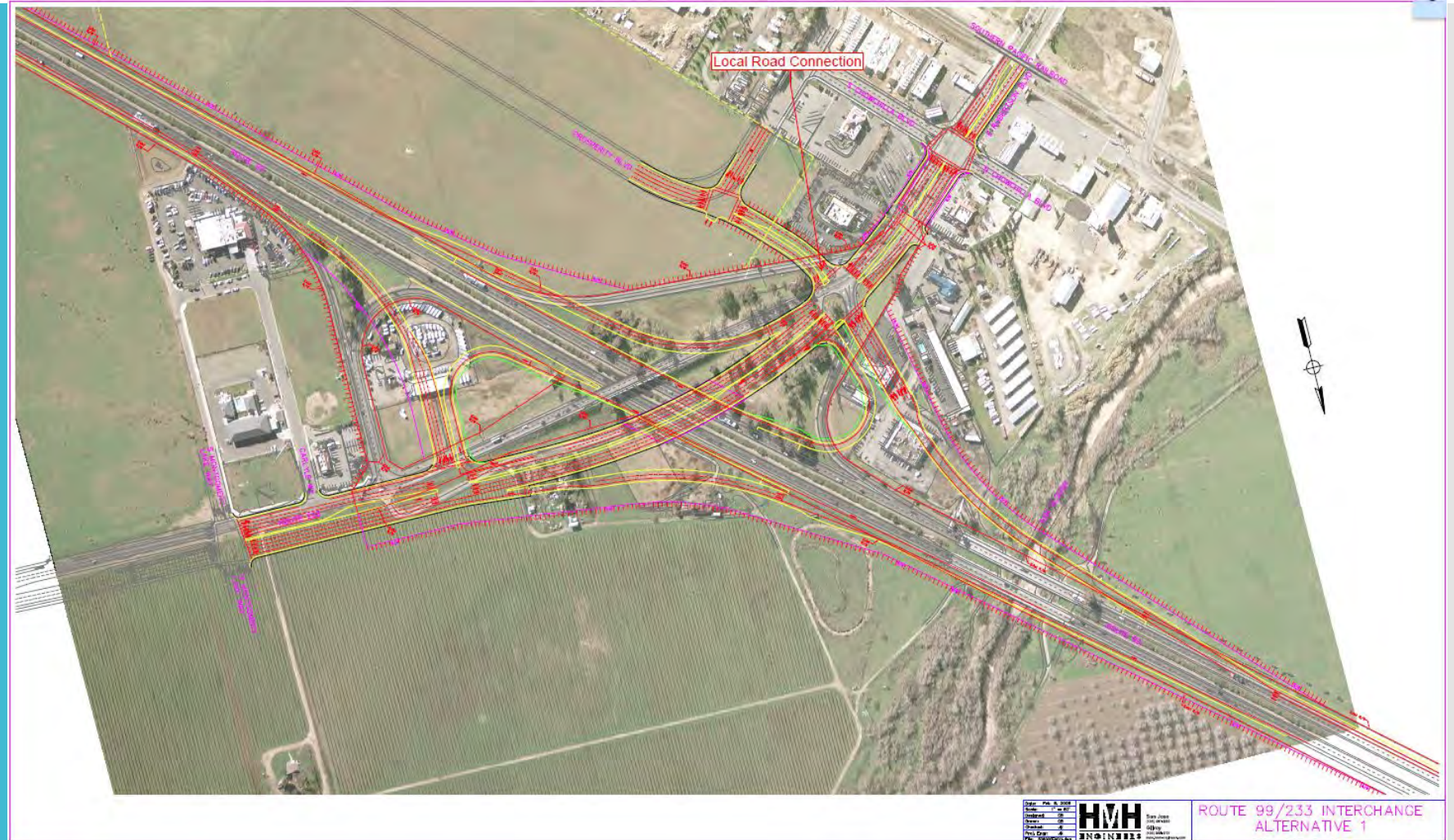


SR 99 / SR 233 Interchange Improvement Project

Project Timeline

Year	Description
2006	Measure T approved by voters
2007	HMH Engineers prepare Project Study Report (PSR)
2009	Caltrans reviewed and accepted PSR
2009-2012	No funding to proceed
2012	Coop Agreement with Caltrans to redesign
2013	Project prioritized in Meas T Strategic Plan
2013	New PSR by Caltrans completed
2014	Coop Agreement between Caltrans and MCTA for environmental
2015	Request from City for signalized intersections
2016	Request from City to suspend project
2016-2019	Numerous discussions/meetings between City, Caltrans, MCTC and review/research of viable alternatives

Initial 2009 Design



Cost - \$56 million to \$61 million (2009 estimate)

2013 Redesign Phase 1



Phase 1 Estimated Cost - \$9,500,000

2013 Redesign Phase 2



Phase 2 Estimated Cost - \$7,000,000

Proposed phasing of redesign

Phase 1

- Construction of two single-lane (expandable) roundabouts.
- Realign southbound off-ramp.
- Widen the south end of the southbound Ash Slough Bridge to accommodate minor realignment of the SR 99 southbound off-ramp.
- The existing SR 233 overpass would remain as is.
- Estimated project cost of \$9,500,000

Phase 2

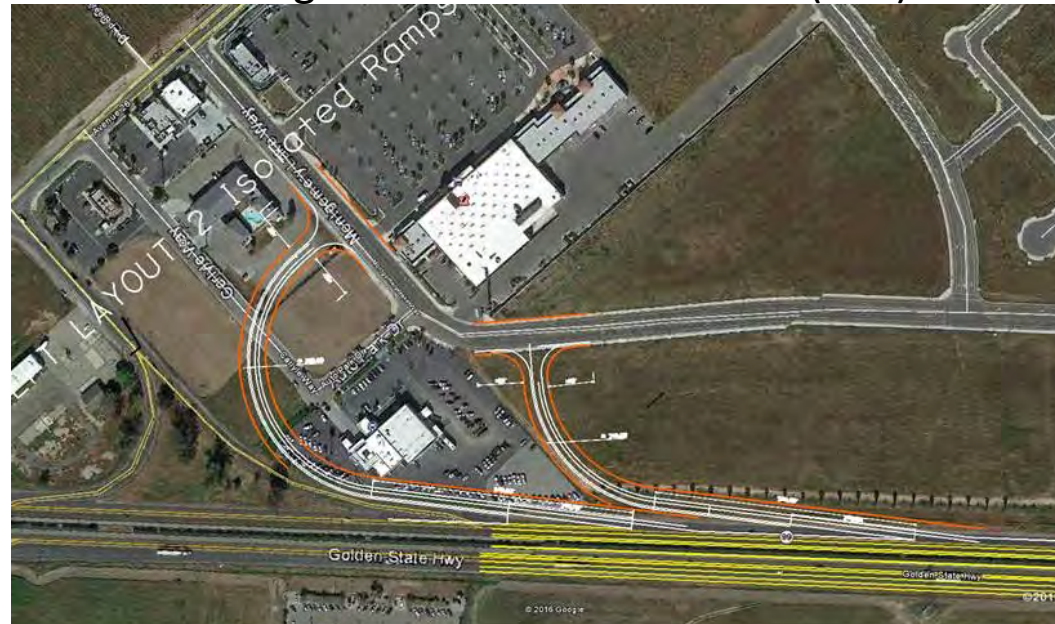
- Add a second through lane to the constructed roundabouts.
- Construct a separate two-lane bridge north of the existing overcrossing, increasing the bridge from a two-lane structure to a four-lane structure and standard- width shoulders and sidewalks.
- Estimated project cost of \$7,000,000

TOTAL PROJECT COST - \$16,500,000

Alternatives Considered

- Initial ultimate build out as proposed by HMM Engineering
- Signalized Intersection with new four-lane bridge
- Signalized intersection
- Stop Signs
- Alternative alignments

These were eliminated upon further review due to excessive costs, limited funding, insufficient design life and level of service (LOS) benefit.



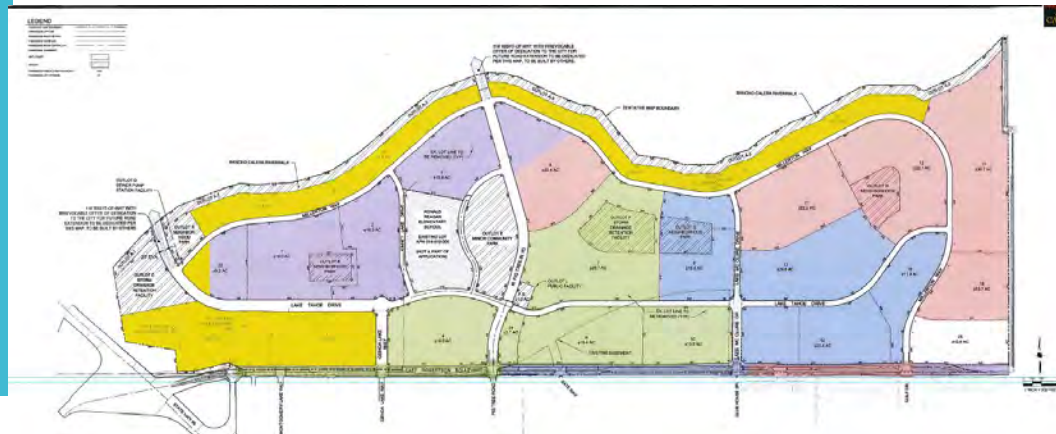
Designed Caltrans District 6 and reviewed by Caltrans Headquarters

Potential Options

1. Reject the preferred project alternative
 - a. Request that MCTC shelve the project and not complete the environmental document.
 - b. Identify an alternative project that could potentially be eligible for future funding.
2. Move forward with the project as currently designed
 - a. Request that MCTC move forward with completing the environmental document.

Option 1 Impacts

- MCTA has already incurred \$1,178,855 in costs related to the project.
- City Measure T Flex Funds are being impounded to cover this cost.
- \$881,576 has been collected, leaving \$297,309 remaining.
- The MCTA Board, as lead agency, can finalize the completion of the environmental document to protect the investment.
- Estimated remaining cost of \$100,000 to complete the environmental document.
- Housing and commercial development impacts.



Option 2 Impacts

- MCTA moves forward with finalizing the environmental document.
- Once completed, the project can then proceed to the engineering, right-of-way acquisition, and construction phases.
- Caltrans showed an initial six year timeline for the project with completion in December 2019. Actual construction - 225 days.
- Now, construction may not happen until sometime in 2024 or 2025 and is contingent on availability of Measure T cash flow.



Option 2 Cost Estimates

Cost Estimates

Description	Cost
Current PSR/ICE/Environmental Phase	\$1,178,885
Caltrans remaining environmental fees to complete Environmental Phase	\$100,000
Right-of-Way	\$2,350,000
Construction	\$13,700,000
TOTAL	\$17,328,885

Funding Estimates

Description	Cost
Measure T Regional Funds	\$7,600,000
Measure T Flex Funds (impounded from all local agencies)	\$4,900,000
Other funding (not currently identified)	\$5,000,000
TOTAL	\$17,500,000

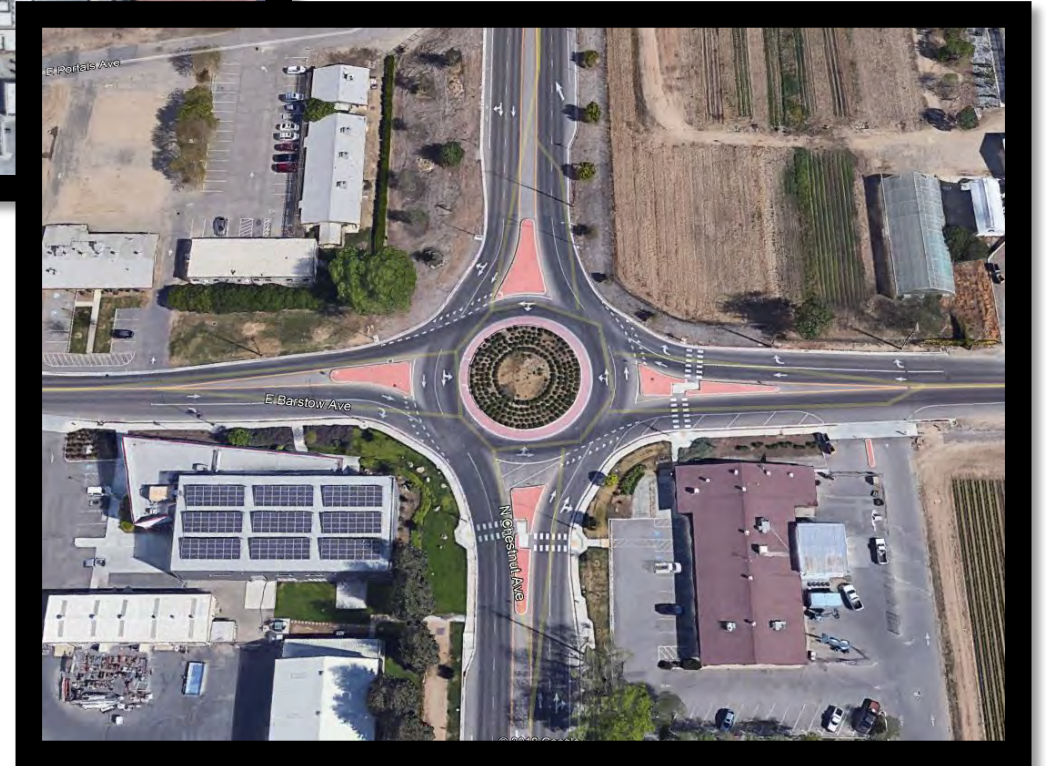
Next Steps

- City staff recommends Option 2 as the most viable option
- Complete environmental
- Identify potential outside funding
- Community involvement

Other Roundabout Examples



Chestnut and Barstow Ave
Near Fresno State University



State Route / Interchange Roundabouts



SR-99/SR-104 in Galt



SR-1 in Fort Bragg



SR-245 in Woodlake



I-80/SR-89 in Truckee

City of Porterville Roundabout



Questions?