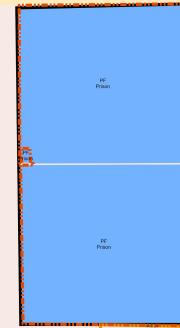
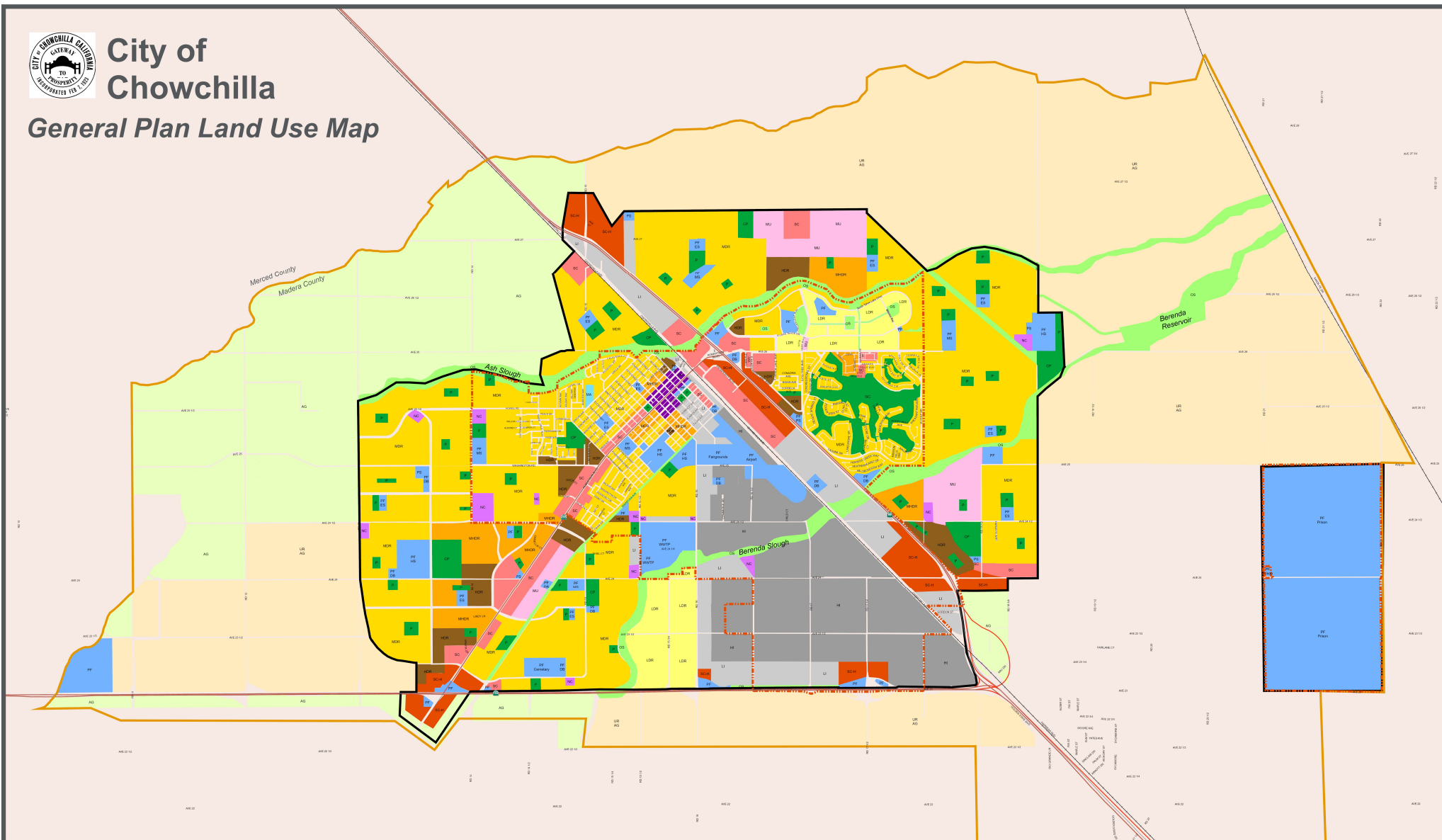




City of Chowchilla

General Plan Land Use Map



- Low Density Residential (LDR)
- Medium Density Residential (MDR)
- Medium High Density Residential (MHDR)
- High Density Residential (HDR)
- Mixed Use (MU)
- Neighborhood Commercial (NC)

- Downtown Commercial (DC)
- Service Commercial (SC)
- Service Commercial - Highway (SC-H)
- Medical Arts (MA)
- Light Industrial (LI)
- Heavy Industrial (HI)
- Agriculture (AG)

- Open Space (OS)
- Neighborhood Park (P)
- Community Park (CP)
- Golf Course (GC)
- Public Facility (PF)
- UR Agriculture (UR AG)
- City Limits
- Primary Sphere of Influence

- Secondary Sphere of Influence
- Airport Protection Overlay Zone
- Greenhills Estates & Golf Club
- Specific Plan Area
- Rancho Calera Specific Plan Area
- Urban Reserve

Public Facility (PF)

- Elementary School (ES)
- Middle School (MS)
- High School (HS)
- Drainage Basin (DB)
- Public Safety Facility (PS)
- Waste Water Treatment Plant (WWTP)
- Prison
- Fairgrounds
- Airport
- Cemetery

Map Prepared by:



0 0.25 0.5 0.75 1 Miles



Updated September 27, 2023

This map was prepared using GIS's Geographic Information System, utilizing data from the City of Chowchilla and the County of Madera. Every reasonable effort has been made to assure accuracy of the data, however QI, the City of Chowchilla, and the County of Madera make no warranty, representation, or guarantee regarding the precision of this map.